

# Bath & North East Somerset Council

MEETING/ DECISION MAKER:	<b>Health and Well Being Board</b>
MEETING/ DECISION DATE:	<b>08 February 2024</b>
TITLE:	<b>Plan to Prevent and Reduce Serious Violence in B&amp;NES 2024-2025</b>
WARD:	All
<b>AN OPEN PUBLIC ITEM</b>	
<b>List of attachments to this report:</b> <b>Plan to Prevent and Reduce Serious Violence in B&amp;NES 2024-2025</b> <b>Summary of Serious Violence Plan</b>	

## 1 THE ISSUE

- 1.1 This document sets out a high-level local plan for reducing serious violence in B&NES. It summarises governance for ongoing serious violence work, recent community engagement, current interventions to reduce serious violence in B&NES and priorities for future work.
- 1.2 The purpose of bringing this document to the Health and Wellbeing Board is to keep the board informed of progress with the Plan, clarify the governance and to gain support for the development of an implementation plan reflecting the determined priorities. It is also to highlight the importance of some actions in the Joint Health and Wellbeing Strategy (JHWS) towards reducing future risk of people becoming involved in serious violence. Particularly actions to support the wellbeing of children, young people and families in JHWS Priority 1.

## 2 RECOMMENDATION

**The Health and Wellbeing Board is asked to;**

- 2.1 Note the key priorities set out in the Plan to Prevent and Reduce Serious Violence in B&NES 2024-2025.
- 2.2 Note the governance structure of ongoing local serious violence work.
- 2.3 Support the development of an implementation plan that will set out how to operationalise the determined priorities.

## **3 THE REPORT**

### **3.1 Background**

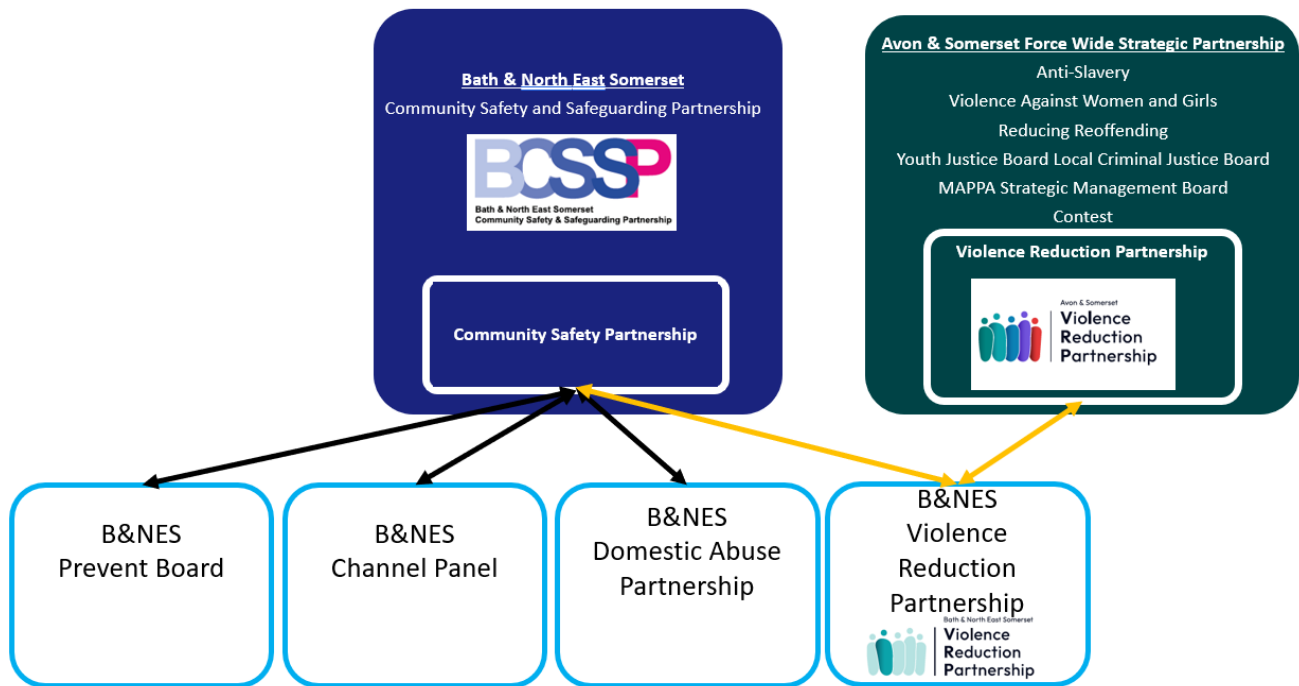
Serious violence has profound societal impacts, necessitating a collaborative public health approach for prevention and reduction. In line with national trends, B&NES is experiencing increasing levels of violent crime. The quantitative data we have available suggests levels may be relatively lower in comparison to some of our neighbouring local authorities, however local qualitative data highlights a perceived increase in knife crime and anti-social behaviour. An important contributing factor to this has been several high-profile fatalities in B&NES in the very recent past.

### **3.2 Governance**

As set out by the Serious Violence Duty, local authorities, police, justice, fire and rescue and health are all specified authorities who have a statutory duty to collaborate in order to produce a plan to prevent and reduce serious violence. The Avon & Somerset (A&S) Office for the Police and Crime Commissioner (OPCC) are convening a regional West of England response through the regional Violence Reduction Partnership (VRP) to fulfil the serious violence duty for the specified authorities

Each of the five local authority areas within the A&S Police area have a local Violence Reduction Partnership (VRP) to identify local needs and to consider the most appropriate local response to reduce and address serious violence. This report, presented to the Health and Wellbeing board is specific to B&NES, reflecting the local need and response. This over-arching B&NES plan is intended to be used alongside an upcoming B&NES implementation plan, which will set out allocated actions that have been agreed by partners. The B&NES VRP will oversee the implementation of the B&NES plans, however collaboration across partners will be necessary throughout.

The B&NES VRP is made up of police, justice, fire, health and the local authority as the specified authorities, with additional support from other agencies including education and the third sector as required. As summarised in the image below, the B&NES VRP is accountable to the Community Safety Partnership which in turn has a line of governance into the Bath & North East Somerset Community Safety and Safeguarding Partnership (BCSSP) and also feeds into the overarching Avon and Somerset Violence Reduction Partnership Office of the Police and Crime Commissioner.



### 3.3 Community Engagement

Ensuring that the voices of the community of B&NES are heard is a key part of the public health approach to serious violence. The voices and experiences of the B&NES community were integrated through contributions from:

- Serious violence specific focus groups with staff from: primary and secondary schools, third sector organisations linked to reducing serious violence, the ICB, police and different roles supporting a reduction in serious violence from across the council.
- A knife crime awareness community event which included discussion and questions from parents.
- Surveys of residents including the Galdem Report (a survey of 11-19 year olds focusing on violence against young women), the voicebox survey (a residents survey for people >18 years that asks questions about community safety) and the schools survey (targeting ages 8-19 and including questions about safety and knife crime).

### 3.4 Priorities

#### 1.Prevention and Early Intervention

*Primary Prevention – preventing serious violence from occurring.*

#### 2.Response and Support

*Secondary Prevention – Immediate response after violence to manage short term consequence and prevent reoccurrence or progression.*

*Tertiary Prevention – Reducing long term harm after violence and preventing further reoccurrence.*

#### 3.Community engagement and ongoing assessment of need

#### 4.Alignment and collaboration within and across organisations

## 4 STATUTORY CONSIDERATIONS

- 4.1 As set out in section 3.2 above, the statutory Serious Violence Duty to produce a needs assessment and strategy to reduce serious violence is being fulfilled by collaboration with the OPCC convened A&S VRP.

## 5 RESOURCE IMPLICATIONS (FINANCE, PROPERTY, PEOPLE)

- 5.1 The proposed implementation plan will set out actions agreed by partners for the upcoming year and the resource implications of them. No specific resource implications have been set out in this document.

## 6 RISK MANAGEMENT

- 6.1 A risk assessment related to the issue and recommendations has been undertaken, in compliance with the Council's decision making risk management guidance.

## 7 EQUALITIES

- 7.1 Serious violence and its determinants disproportionately impact certain groups, as described in the attached plan. This can exacerbate existing inequalities. The proposed implementation plan will set out actions to reduce these inequalities.

## 8 CLIMATE CHANGE

- 8.1 There are no direct implications for climate change in this report.

## 9 OTHER OPTIONS CONSIDERED

- 9.1 None

## 10 CONSULTATION

- 10.1 This report has been reviewed and cleared by members of the B&NES VRP, B&NES Serious Violence Steering Group and BCSSP ahead of submission to the Health and Wellbeing Board. Additionally, it has been reviewed by the S151 Officer, the Monitoring Officer and the Director of Public Health.

<b>Contact person</b>	Joshua Khan, Public Health Registrar, B&NES Council. <a href="mailto:Josh_khan@bathnes.gov.uk">Josh_khan@bathnes.gov.uk</a>  Paul Scott, Associate Director of Public Health, Public Health & Prevention, B&NES Council, 01225 394060
<b>Background papers</b>	
<b>Please contact the report author if you need to access this report in an alternative format</b>	

